

---

# WelLevator™ Pipette Guide

---

Catalog No. 11970

Quantity: 1 unit

## INSTRUCTION MANUAL

Version 04222015



Please recycle



## INTRODUCTION

---

Manual extraction of liquids from 96 well plates using multichannel pipettes can be mechanically awkward and tedious. The sheer number of wells and the opacity of the plate make it difficult to avoid pelleted materials and to achieve well-to-well consistency.

The WelLevator™ Pipette Guide is designed to facilitate consistent and fatigue-free extraction of liquids from SBS (Society for Biomolecular Screening) formatted 96 well plates when using a multichannel pipette.

The WelLevator™ Pipette Guide can be used with either 8 or 12 channel multichannel pipettes in conjunction with the appropriate pipette tips.

With the WelLevator™ Pipette Guide you can minimize hand fatigue while significantly improving well-to-well consistency.

## INSTRUCTIONS (REFER TO FIGURES ON PAGES)

### Welllevator™ Pipette Guide

Catalog No. 11970

---

1. Loosen the **Adjustment Knob** for the **Adjustment Table** and place the **Adjustment Table** at its lowest setting of 10 (bottom).

Note

Setting is indicated by reading the center of the top stainless steel pin against the engraved scale on the back of the unit.

2. Position your desired SBS formatted 96 well plate on the **Adjustment Table** by leading in with the upper left corner of the plate (Well A1). Press the lower right corner of the plate (well H12) into place past the **Spring Steel Clip**.

Note

The Spring Steel Clip can be pressed either direction prior to insertion of the plate to increase or decrease the tension on the plate as needed.

3. Load your pipette with the appropriate tips.
4. If you are using an 8 channel pipette, align the tips above the wells in Column 1 (Fig2-A). If your pipette is a 12 channel format, align the tips above Row H (Fig2-B).
5. Allow your pipette to rest on the top of the **Welllevator™ Pipette Guide**.
6. Slowly raise the **Adjustment Table** while observing the depth of the tips as they enter the plate wells. When the desired height is achieved, tighten the **Adjustment Knob** to secure the location of the **Adjustment Table**.
7. Remove the first column or row of liquid by aspirating with your pipette and either discard or transfer the material depending on your protocol needs.
8. Eject the tips and load your next set of tips.
9. Place the tips in the next column or row and continue with your extractions. Repeat until all wells have been cleared.
10. Record the **Welllevator™ Pipette Guide** setting used in the protocol you are running so that you can avoid the initial height determination the next time you run the same protocol by utilizing the provided **Welllevator™ Pipette Guide Reference Sheet** or Excel Spread Sheet located at [www.mobio.com/wellevator](http://www.mobio.com/wellevator)

Note

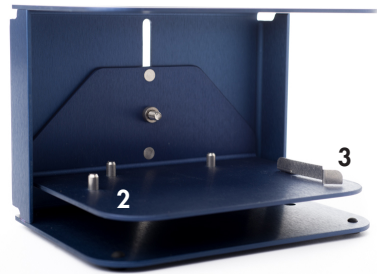
Settings will vary depending on the pipette and pipet tips utilized, so the settings you determine will be specific to your pipette and tips.

**11.** Repeat steps 1 – 7 whenever you need to account for a different plate height and/or well dimensions, length of pipette tip or volume of pelleted material.

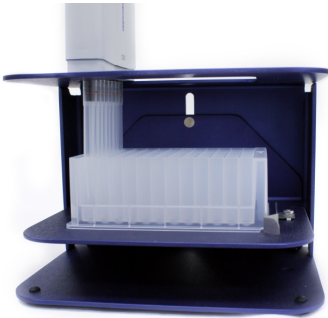
**Figure 1:** (1) Adjustment Knob, (2) Adjustment Table, (3) Spring Steel Clip.



**Figure 2-A**



**Figure 2-B**



---

**Thank you for choosing the WelLevator™ Pipette Guide.**

---

## PRODUCTS RECOMMENDED FOR YOU

Accessories	Catalog#	Amount	This is for you if...
PowerMag® Magnetic Separator	27400	1 unit	You are using any of the PowerMag® Kits (see below) with a WelLevator™.
96 Well Plate Shaker	11996	1 unit	You need to homogenize samples in 96 well plates.
Plate Adapter Set	11990	Set of 4 adapters	You need a set of adapters to assemble two 96 well plates on the 96 Well Plate Shaker.

Kit	Catalog#	Amount	This is for you if...
PowerSoil® -htp 96 Well Soil DNA Isolation Kit	12955-4 12955-12	4 x 96 preps 12 x 96 preps	You need a kit for high-throughput isolation of DNA from soil.
PowerPlant® Pro -htp 96 Well DNA Isolation Kit	13496-4	4 x 96 preps	You are looking for a method of high-throughput DNA isolation from plants or seeds.
UltraClean® -htp 96 Well Microbial DNA Kit	10196-4 10196-12	4 x 96 preps 12 x 96 preps	You need a high-throughput method to isolate DNA from microbial cultures.
UltraClean® -htp 96 Tissue DNA Isolation Kit	12996-4	4 x 96 preps	You need a high-throughput method to isolate DNA from animal tissues and cells.
PowerMag® Soil DNA Isolation Kit	27100-4-EP 27100-4-KF	4 x 96 preps	You need a kit for automated high-throughput isolation of DNA from soil.
PowerMag® Microbial DNA Isolation Kit	27200-4	4 x 96 preps	You need a kit for automated high-throughput isolation of DNA from microbial cultures.
PowerMag® Seed DNA Isolation Kit	27700-4-KF	4 x 96 preps	You need a kit for automated high-throughput isolation of DNA from seed samples.
PowerMag® Air & Water DNA/RNA Isolation Kit	27800-4-EP	4 x 96 preps	You need a kit for automated high-throughput isolation of DNA from air and water filters.
PowerMag® Blood DNA/RNA Isolation Kit	22100-4-KF	4 x 96 preps	You need a kit for automated high-throughput isolation of DNA from blood.



## TECHNICAL SUPPORT

Phone: Toll Free 800-606-6246,  
or 760-929-9911

Email: [technical@mobio.com](mailto:technical@mobio.com)

Mail: MO BIO Laboratories, Inc.,  
2746 Loker Ave West, Carlsbad,  
CA 92010

Committed to resolving your technical questions promptly, our technical support team is trained to work with you to rapidly and effectively trouble shoot any issues.

We commit to providing you with relevant online support resources that help you complete your research projects.

## Frequently Asked Questions:

[www.mobio.com/faq](http://www.mobio.com/faq)

## SDS:

[www.mobio.com/sds](http://www.mobio.com/sds)

## Protocols:

[www.mobio.com/protocols](http://www.mobio.com/protocols)

## Trademarks

Inhibitor Removal Technology® (IRT) is a registered trademark of MO BIO Laboratories, Inc. and is covered by patents.

For other Trademarks and Limited Use Label License information go to:

[www.mobio.com/lull-tm](http://www.mobio.com/lull-tm)



---

Corporate Headquarters  
**MO BIO Laboratories, Inc.**  
2746 Loker Avenue West  
Carlsbad, CA 92010

**Technical Support:**

Toll Free 800-606-6246, or 760-929-9911  
Email: [technical@mobio.com](mailto:technical@mobio.com)

**Ordering Information:**

Toll Free 800-606-6246, or 760-929-9911  
Fax: 760-929-0109  
Email: [orders@mobio.com](mailto:orders@mobio.com)

For the distributor nearest you, visit our website at [www.mobio.com/distributors](http://www.mobio.com/distributors)

---

World Leader in Soil DNA & RNA Isolation®. © 2015 MO BIO Laboratories, Inc. All Rights Reserved